

Treat deep
caries with
minimal
aerosol
exposure



Atraumatic Restorative Treatment (ART)

BiodentineTM

Minimising droplet & aerosol generation
with ART technique and BiodentineTM



What is ART procedure?

Remove dental caries using only hand instruments (no drill/no turbine)



Restore the cavity with a filling material

Save the tooth rather than extracting it (Minimally invasive therapy)

Maintain the vitality of the pulp, as supported by the European Society of Endodontology (ESE)



Photos from Dr Rocio Lazo

ART procedure benefits

- Avoid aerosol generation
- Save the tooth
- Reduce the chance of odontogenic infection
- Manage pain

Why choose Biodentine™ with ART procedure?



Biodentine™ can be placed from the pulp to the top of the cavity (bio bulk fill).

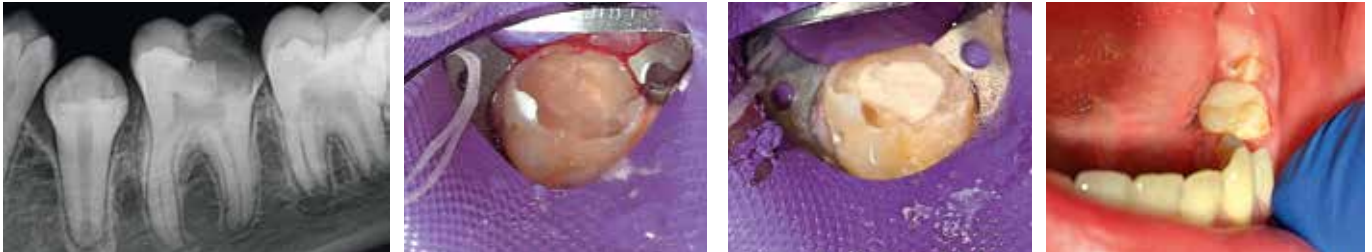
For ART procedure, it is recommended to place the final enamel restoration in the same session.

83,3%*
positive success rate

Biodentine™ has a **positive success rate of 83,3%*** during pulp capping procedure with manual removal of the soft dentine and round carbide burs on a slow speed hand-piece.

*Hedge et al: Clinical evaluation of Mineral Trioxide Aggregate and Biodentine™ as direct pulp capping agents in carious teeth (2017).

Recommended procedure^{*} in 1 session



Photos from Dr Rocio Lazo

- 1** Examination with x-rays if necessary. If the tooth can be restored (as in a cavitated lesion with reversible pulpitis), an ART can be considered.
- 2** Rinse with 1.5% hydrogen peroxide or a povidone-iodine oral rinse.
- 3** Administer local anaesthesia as indicated.
- 4** Place rubber dam for isolation.
- 5** If there is access to the lesion begin excavation of the caries using surgical curettes or spoon excavators, to remove as much of the lesion as is appropriate from clinical judgment. Place matrix if appropriate in preparation for the restoration.
- 6** Mix Biodentine™ and bulk fill the cavity with Biodentine™. The total handling time of Biodentine™ is 12 minutes (6 minutes for mixing and placement, and 6 minutes for setting in the mouth).
- 7** After complete setting of Biodentine™, the cavity may be covered in the same session with a composite filling in combination with a self-etching dentine adhesive if desired.
- 8** Remove the rubber dam and verify occlusion.
- 9** Patient can be dismissed with chewing, care and maintenance instructions.
- 10** Set up appropriate phone follow-up.



^{*}By Mark Roettger DDS, Chief of Dentistry, University of Minnesota Medical Center

Septodont - Units R & S - Orchard Business Centre - St Barnabas Close - Maidstone - Kent - ME16 0JZ - UK
Tél. : +44 (0)1622 695520
Please visit our website for more information:
www.septodont.co.uk

